



Millbrook Park Messenger Autumn/Winter 2017



www.millbrookpark.com



MILLBROOK
PARK

MILL HILL

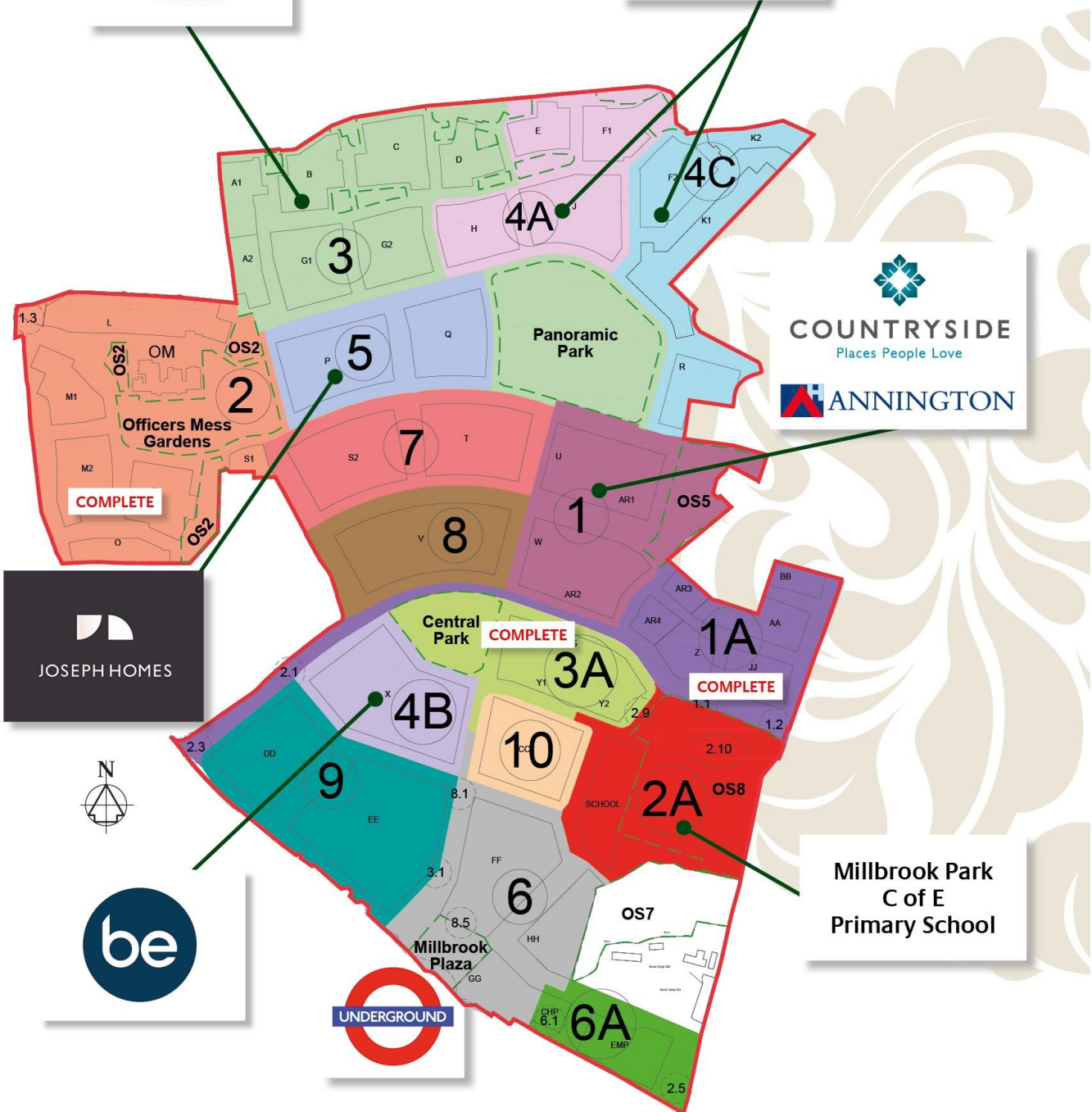


MILLBROOK PARK

MILL HILL

Linden
HOMES

Taylor Wimpey



Millbrook Park will be developed in 14 phases with expected completion of the 2240 apartments and houses in 2024



News Update



Since works began at Millbrook Park in December 2011, major progress has been made in turning the initial vision into homes for thousands of new residents and creating a new community.

The picture above shows the final phase of demolition has begun following the relocation of services from London Borough of Barnet's depot opposite Mill Hill East station.

Having begun work on forming Millbrook Park in late 2011 we now start to see real progress. At the time this newsletter was published 510 dwellings had been completed and occupied with a further 60 expected to complete by December 2017.

New homes are currently being offered by Be Living, Linden Homes, Countryside Annington and Taylor Wimpey. Interest is high and purchasers are making the decision to move to Millbrook Park.



www.millbrookpark.com



News Update

Barratt London secures phase 9 at Millbrook Park



Barratt London have successfully completed the purchase of phase 9 at Millbrook Park. The phase will deliver 355 homes comprising 297 private 1 & 2 bedroom apartments and 3 & 4 bedroom houses and 58 affordable rent or shared owners apartments and houses. Phase 9 provides the first of the retail space around Millbrook Plaza opposite Mill Hill East station.

Matt Calladine, Regional Land & Development Director, Barratt London, said:

“Phase 9 at Millbrook Park is an important site in the context of the wider redevelopment of the Inglis Barracks. We are looking forward to working closely with Inglis Consortium LLP, the London Borough of Barnet and local stakeholders to ensure the delivery of high quality homes and new commercial facilities that will benefit the entire community.”

Sanctuary Homes secures phase 10 at Millbrook Park



Sanctuary Homes has completed the purchase of Phase 10 at Millbrook Park at the end of September. Sanctuary’s successful bid was for 110 units, comprising a mix of one and two-bed apartments and three-bed houses, either for shared ownership, affordable rent or private market.

The design outlined that the family houses will have their own private gardens and all apartments will have their own private terrace or balcony. A communal landscaped courtyard will also be overlooked by the homes while a children’s play area and seating areas have also been proposed.

Jacquie Agyemang-Johnson, Sanctuary’s senior development manager – London, said: “We are excited to have been successful in our bid for the Millbrook Park development and look forward to delivering these new homes.”

For more information on Millbrook Park please visit our website at www.millbrookpark.com

You will find links to the housebuilders dedicated web pages.

www.millbrookpark.com



Taylor Wimpey



Discover the magnificent Taylor Wimpey showhomes at Millbrook Park

Property-seekers hoping to go through the keyhole at Millbrook Park in Mill Hill can now do exactly that thanks to the stunning range of Taylor Wimpey showhomes at the development.

The wonderful two-bedroom 'Curlew' show apartment and the fabulous four-bedroom 'Orton' and 'Magra' showhomes are now available to view, offering a tantalising glimpse of the fantastic lifestyle opportunities on offer in this enviable location. The Mayor of Barnet Councillor Brian Salinger officially opened the magnificent 'Magra' showhome during a special event on Friday 22nd September.

With prices starting at just £426,000, Millbrook Park features a variety of properties to suit buyers in a range of circumstances, from spacious one and two-bedroom apartments to generous three, four and five-bedroom houses – with selected apartments available with the popular Help to Buy London scheme.

www.millbrookpark.com



**Taylor
Wimpey**



Jack Costello, Regional Sales and Marketing Director for Taylor Wimpey North Thames, says: “Our stylish showhomes provide the perfect opportunity for house-hunters to see just what can be achieved with the blank canvas of a new home at this popular development.

“Anyone who hasn’t yet had the chance to view these wonderful properties should visit us as soon as possible to experience a taste of the amazing lifestyle at Millbrook Park.”

The exceptional ‘Magra’ is a unique design boasting 2,348 square feet of accommodation with an amazing open-plan kitchen/dining room, which flows into a spectacular 23ft living room and also has double doors to a private courtyard.

Upstairs, the first-floor landing leads to three good-sized bedrooms, one with its own en-suite shower room, and a family bathroom. There’s also a second living room which opens onto a huge terrace with steps down to the courtyard to make the most of this substantial property’s generous outdoor space.

The top-floor layout is dedicated to the luxurious en-suite master bedroom and a further balcony. The property also benefits from an internal double garage and parking outside.

Alternatively, the fabulous ‘Curlew’ apartment includes an open-plan kitchen living/dining room with double doors to a private terrace/balcony, two good-sized bedrooms, one with an en-suite shower room, and a main bathroom.

The stylish ‘Orton’, meanwhile, features a wealth of generous accommodation across three floors, perfect for contemporary lifestyles.

To find out more, property-seekers should visit the Sales Information Centre, located off Henry Darlot Drive, Mill Hill, London, NW7 1FF, and open daily from 10am to 5.30pm, call the Sales Executives on 0203 675 9414 or visit www.taylorwimpey.co.uk.

www.millbrookpark.com



Introducing, Joseph Homes, first homes launching in Autumn 2018 at Millbrook Park.

Work will soon commence on site to create 144 beautifully crafted homes. This boutique development comprises 111 one and two-bedroom contemporary apartments, and 33 three and four-bedroom townhouses. Phase 1 is due to launch in Late Summer/Early Autumn 2018, with completions from Winter 2018.

At Joseph Homes, design sets us apart, drives us and enables us to challenge the status quo. It is at the forefront of everything we do, because it is through our architecture and interior design that we communicate the core principles of our brand. Carefully selected details add personality and individuality to every home, each delivered with exacting precision and attention.



www.millbrookpark.com



Joseph Homes are currently optimising layouts to ensure the homes are tailored to modern family living, with a good balance of living and sleep accommodation. The level of craftsmanship runs all the way through our homes, from foundations to finishes. By responding to local people, personalities and surroundings, every detail should be unique in character and share the hallmarks of our brand.

Designed by award-winning architects 3DReid, Joseph Homes, Millbrook Park has adapted the classic Regency style to address contemporary life. Formed around a private centralised courtyard garden, the main apartment building is split by a glass atrium, creating a marker for the entrance of the building, and visually linking the space with the Panoramic Park. Top floor penthouses feature roof terraces with views across London and beyond.

Demonstrating our commitment to sustainable development, our homes at Millbrook Park will be heated from a central District Heating source, and distributed through a network of hot water pipes. We will also use materials with the FSC Recycled label, in recognition of the important role that reclaimed materials play in protecting the world's forests.

Joseph Homes has been established for nearly a decade. It is a participation-age company and multi-disciplinary team passionate about developing homes. Our design-led philosophy and creative approach enable us to deliver exceptional homes across London.

Help to buy will be available six months prior to completions (subject to availability). For more information and to register interest in Joseph Homes, Millbrook Park, email: hello@josephhomes.co.uk or call 020 7499 7272.

www.millbrookpark.com



First homes go on sale at The Claves – and a show home opens soon.

A selection of luxurious one and two-bedroom apartments has been released for sale at The Claves in Millbrook Park, at prices starting from £425,000. A marketing suite will open in early November, together with a one-bedroom show home, giving the first glimpse of these exceptional homes.

The Claves enjoys one of the best locations in Millbrook Park: next to the central park and a short walk from Mill Hill East underground station.

Designed by award-winning architects Broadway Malyan the homes are arranged around a residents-only 'secret garden'. Each apartment has a balcony or terrace and some top-floor apartments enjoy superb wraparound terraces with panoramic views towards the City.

www.millbrookpark.com



The specification is very high with superb kitchens by Leicht, elegant bathrooms with Porcelanosa tiling, underfloor heating and higher-than-usual ceilings that enhance the space.

Residents benefit from underground parking and a residents' lounge; a concierge service and fully-equipped gym will be introduced when the development is complete.

In addition to the apartments, a selection of townhouses at The Claves will be launched in early 2018.

For more information please contact selling agents Savills on 020 8168 0377 or millbrookpark@savills.com. Also visit www.be.co.uk.

www.millbrookpark.com



MILLBROOK
PARK

MILL HILL



COUNTRYSIDE

Places People Love



ANNINGTON



Introducing The Mount, Millbrook Park a highly anticipated development offering a new collection of stylish, contemporary homes situated in an elevated position within walking distance of Mill Hill East tube station in sought after Mill Hill NW7.

Every home at The Mount has been meticulously designed, making the most of natural daylight, providing superb views of the countryside and parkland surroundings, resulting in new houses and apartments you'll be proud to call home.



Comprising a superb range of contemporary 1 and 2 bedroom apartments and 3 and 4 bedroom luxury townhouses, set around landscaped courtyards, The Mount is set to become one of the most desirable new addresses in Mill Hill.

The last of the luxury 3 & 4 bedroom houses are now available, so be sure to register your interest today to ensure you don't miss out.

**The Marketing Suite is now open Thursday to Monday, 10am-5pm
The Mount, Maurice Browne Avenue, Off Morphou Road, Mill Hill,
NW7 1ED. Or visit www.themount-millbrookpark.co.uk**

www.millbrookpark.com



Millbrook Park by Linden Homes.

Linden Homes have had a successful summer at Millbrook Park and have only a small number of 4 bedroom houses still available.

For more information on Millbrook Park, a development of beautiful homes a few minutes from Mill Hill East tube station, please visit the Linden Homes' website:

www.lindenhomes.co.uk.

Alternatively call 02037 334614 for more details. The sales and marketing suite on site is open every day from 10am to 5pm.



www.millbrookpark.com



**MILLBROOK
PARK**
MILL HILL

Officers Mess Gardens

The Officers Mess Gardens in the north eastern corner of Millbrook Park is now open to all residents . The gardens frame the Officers Mess which has been converted to 15 dwellings.

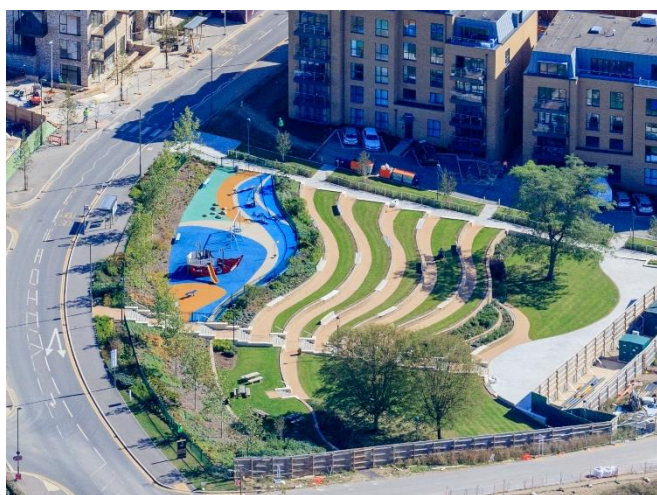
This park is one of 4 being constructed to benefit residents of Millbrook Park.

The Civic Square, to be known as Millbrook Plaza, will be completed by the end of 2019. This important landscaped area is situated opposite Mill Hill East station and will provide the gateway into Millbrook Park .



The retail and commercial centre of Millbrook Park will be in buildings surrounding Millbrook Plaza. The current programme for delivery of these facilities will be in 2020. The make up of the retail element will be determined by market forces but it is expected that it may include restaurants, shops and office space.

Central Park



Central Park has now opened to public use and has been well received by Millbrook Park residents.

www.millbrookpark.com



Panoramic Park

Panoramic Park is situated in the north of Millbrook Park adjacent to phases 3, 4a, 4b, 5 and 1. Currently under final construction and will be completed and opened in Spring 2018.



MILLBROOK PARK C.E. PRIMARY SCHOOL

"There is a great energy at Millbrook Park School to our learning that influences our curriculum, sporting aspirations, music and daily life. Underpinning all that we do is our Christian faith and commitment to the Convention for the Rights of a Child. Our children are joyful risk takers, curious learners, intelligent thinkers, polite servants who support and are supported by one another."

As a community of parents, friends, school staff and governors we are aspiring to nurture a child who can stand tall in the world that they inhabit. Without doubt their future world will be very different to ours but if we walk together and see our common duty is to equip our children spiritually and with as many resources as possible. And when it is their turn, they too will take on the duty of supporting tomorrow's children."

Anthony David, Executive Head Teacher

Nicola Dudley, Head of School

millbrookparkschool.lidsact.org



In September 2015 Millbrook Park School were delighted to open their brand new, state of the art nursery. Following the opening of the school in 2014, it had taken an additional twelve months to finalise the nursery's development to ensure that what it offers is the best available for your child, not just in the area but across London. They have invested nearly £100,000 in doing this - by far our biggest capital investment to date. They issue the following invitation to parents "Please come and visit".

www.millbrookpark.com